

ERIN'S ACRES CONDOS

18116-2006
6-13-2006

UNITS

A. JAMES E & NANCY J FISHER (JT) 19341-2006
6-23-2006

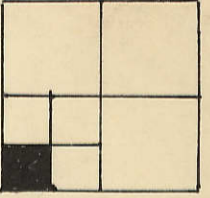
B. Robert K & Lynn J Service (JT) 37353-06 12-1-06

C. _____
28321-2006

D. HOBAN LIVING TRUST 9-7-2006

E. _____

(33)



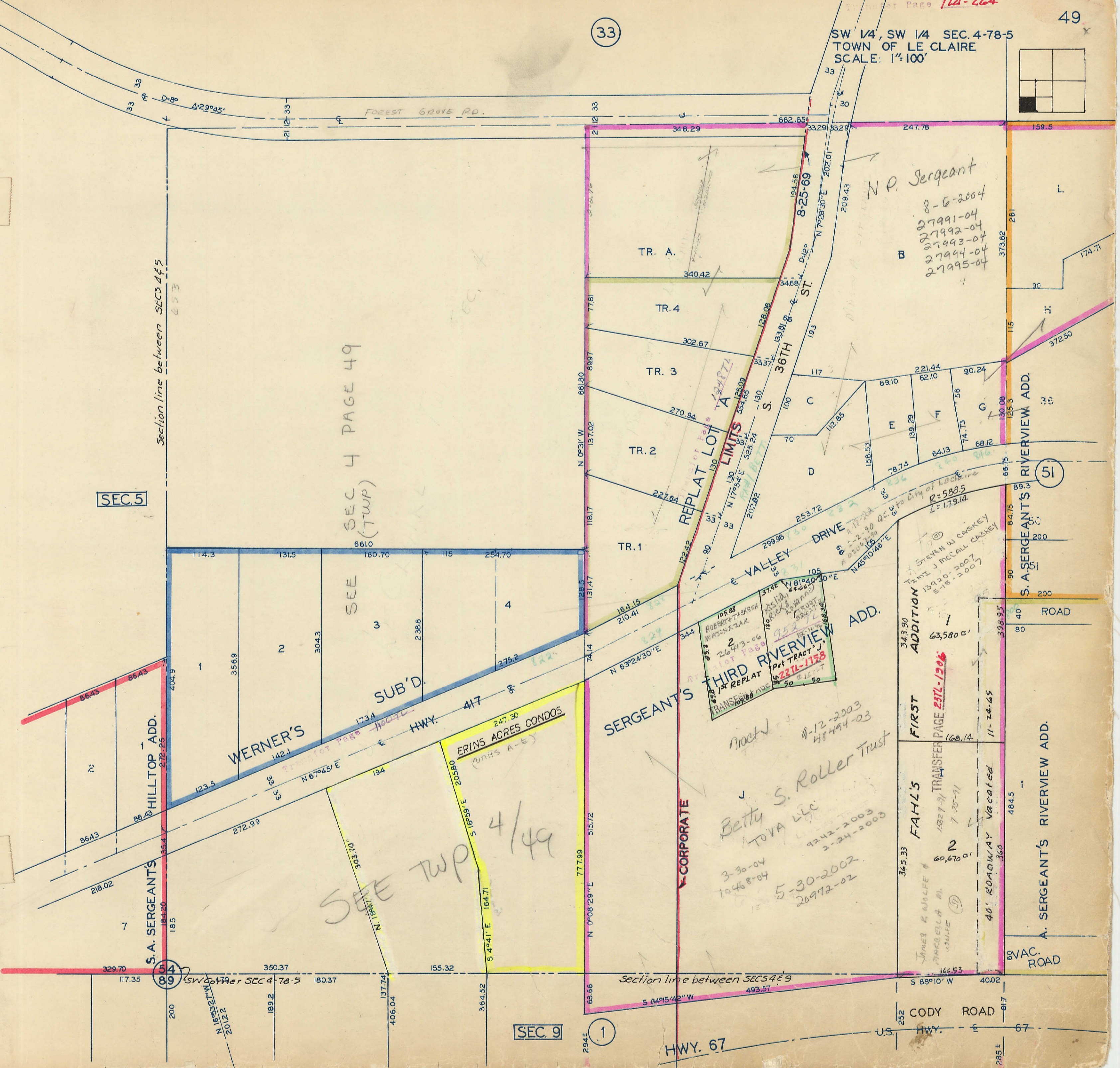
Section line between SECS 4 & 5
653

SEC. 5

SEC 4 PAGE 49
(TWP)

SEE

SEE TWP 4/49



S. A. SERGEANT'S
HILLTOP ADD.
212-25
212-25
184.20
185
185

WERNER'S
142-1
1734
1734
123.5
3.5
3.5
N 67°45' E
194

ERINS ACRES CONDOS
(units A-E)
20580
S 45°41' E 164.71

THIRD RIVERVIEW ADD.
TRANSFER
1st REPLAT
221L-1158
3742
ROBERTA THERESA
WISCHITZAK
26413-06
530278
2000

Betty S. Roller Trust
TOVA LLC
3-30-04
10468-04
5-30-2002
26972-02

FIRST ADDITION
TRANSFER PAGE 231L-1206
13920-2007
5-15-2007

FAHL'S
JAMES R. WOLFE &
SARACHELLA M.
WOLFE
13829-91
7-25-91
60,670 sq ft
40' ROADWAY vacated
11-24-65

SERGEANT'S ADD.

CORPORATE

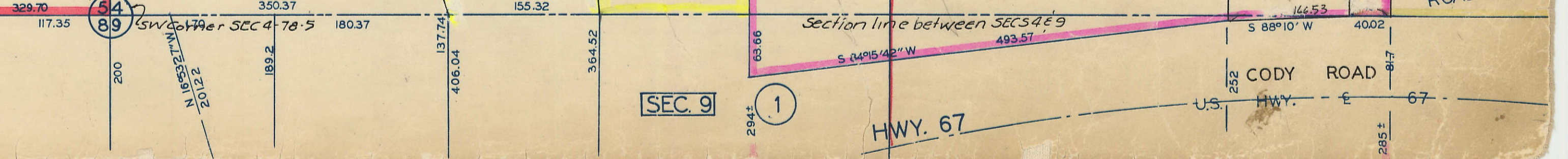
SERGEANT'S
SERGEANT'S RIVERVIEW ADD.

STEVEN W. CASKEY
JAMES J. MCCALL CASKEY
13920-2007
5-15-2007

2-2-90 Q.C. to City of Le Claire
R=588.5
L=179.14

N.P. Sergeant
8-6-2004
27991-04
27992-04
27993-04
27994-04
27995-04

(51)



SEC. 9

(1)